

YG-DCO-015-A(B)

Yorkshire Green Energy Enablement (GREEN) Project

Volume 2

Document 2.8.2(B) Statutory or Non-Statutory Sites or
Features of Nature Conservation Plan Section B

Final Issue B

July 2023

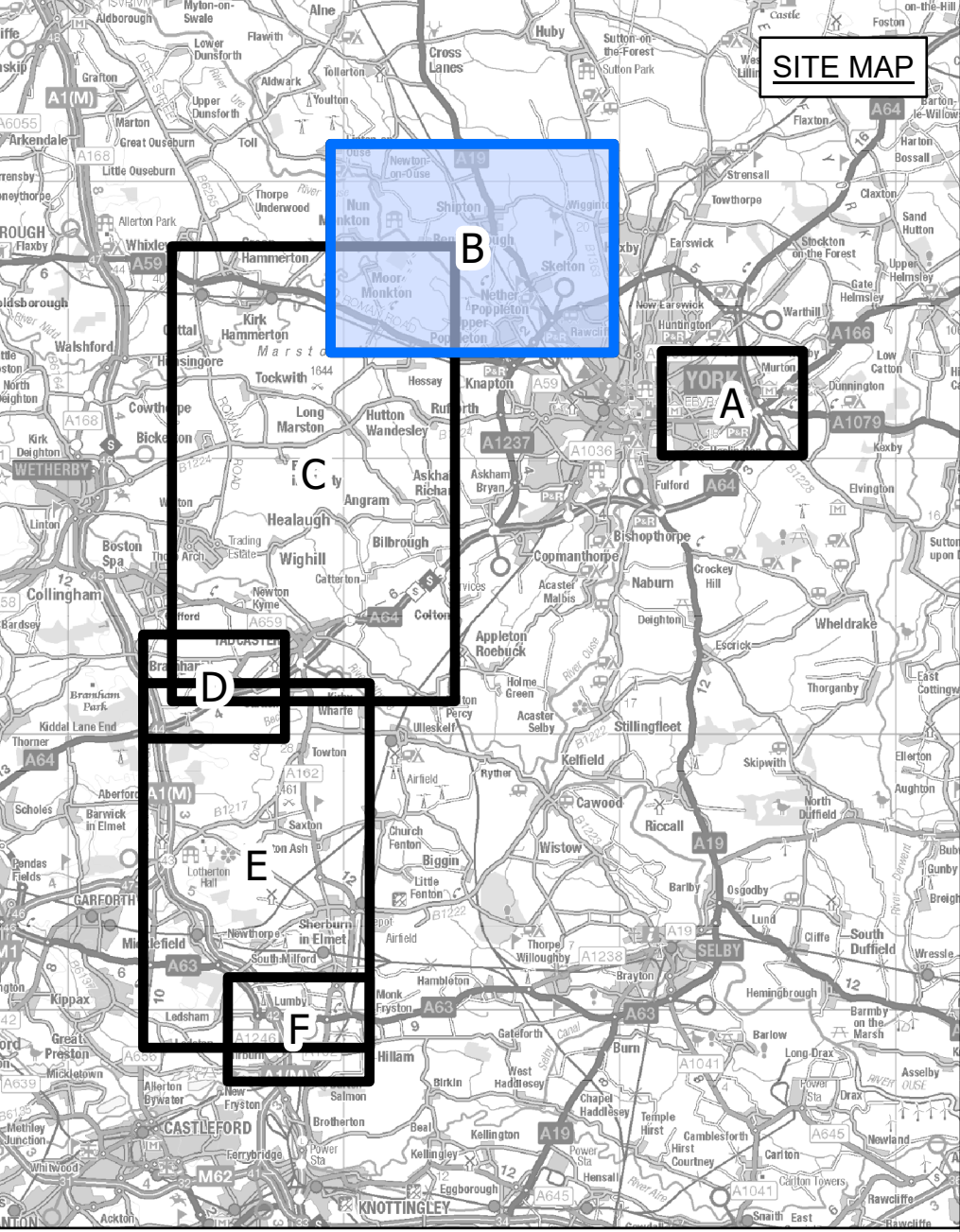
Planning Inspectorate Reference: EN020024

Infrastructure Planning (Applications: Prescribed Forms and
Procedure) Regulations 2009 Regulation 5(2)(l)(i)

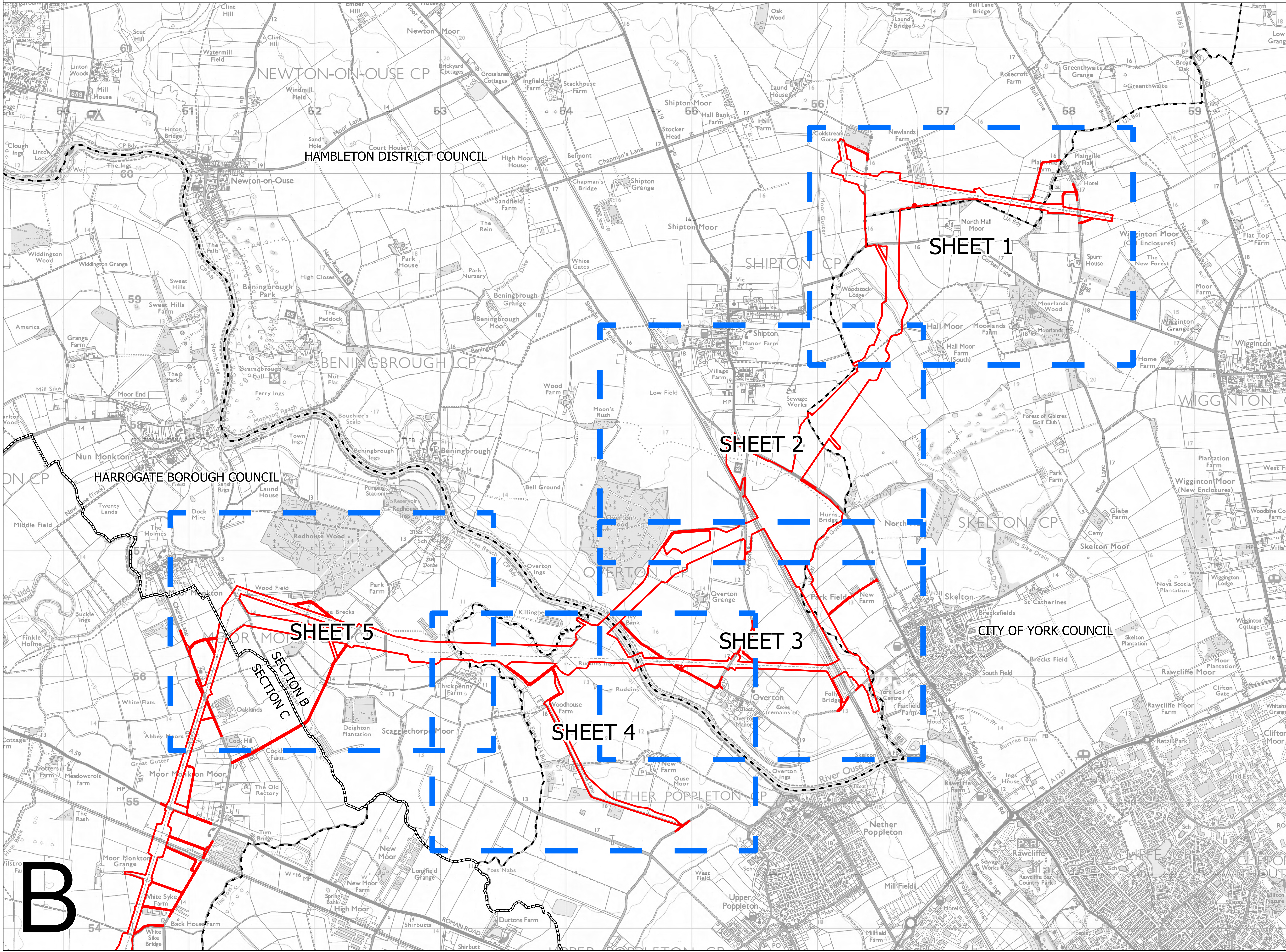
nationalgrid



NATIONAL GRID (YORKSHIRE GREEN ENERGY ENABLEMENT PROJECT) ORDER
 STATUTORY OR NON-STATUTORY SITES OR FEATURES OF NATURE CONSERVATION KEY PLAN
 REGULATION 5(2)(I)(i)
 SECTION B, SHEET 1 OF 1



- LEGEND**
- LOCAL AUTHORITY BOUNDARY
 - - - SECTION BOUNDARY
 - ▭ ORDER LIMITS
 - SHEET INDEX



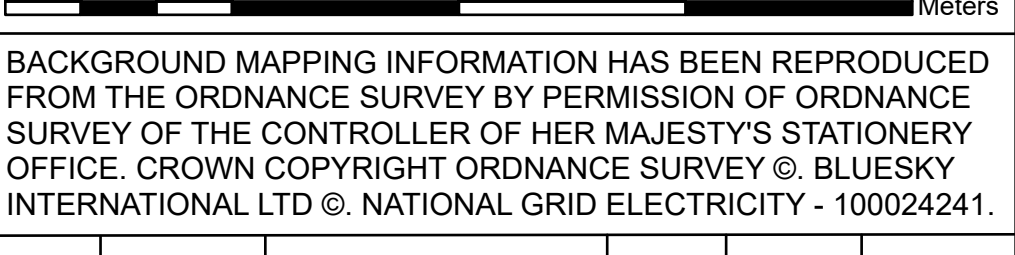
Notes

This drawing is scaled at paper size A0, therefore any prints taken at smaller sizes will affect accuracy of the measurement units and should not be scaled against.

For additional detail on the plan suites, please refer to Document 2.3 Plan Guidance Document, located in Volume 2 of the DCO Application.

The local authorities' boundaries and titles are correct at the time of submission. North Yorkshire County Council and its 7 districts are expected to form a new single council (North Yorkshire Council) on 1 April 2023.

Coordinate System: British National Grid
 Sheet X Centroid Coordinate: 455410 Sheet Y Centroid Coordinate: 457592



Issue	Date	Remarks	Drawn	Checked	Approved
B	28/07/2023	FOR DEADLINE SIX	MTH	SF	EMD
A	01/11/2022	FOR DCO SUBMISSION	MTH	SF	EMD

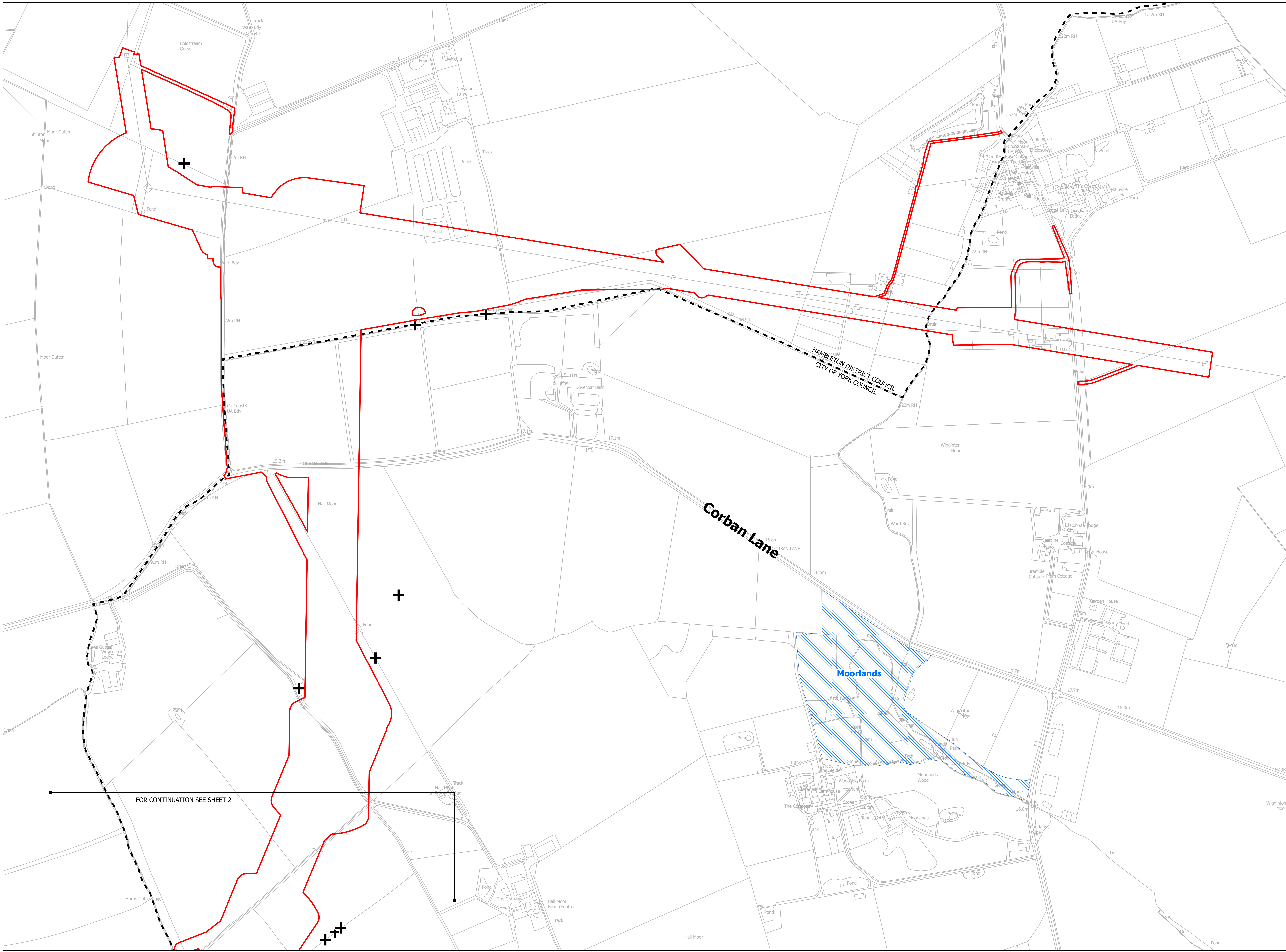
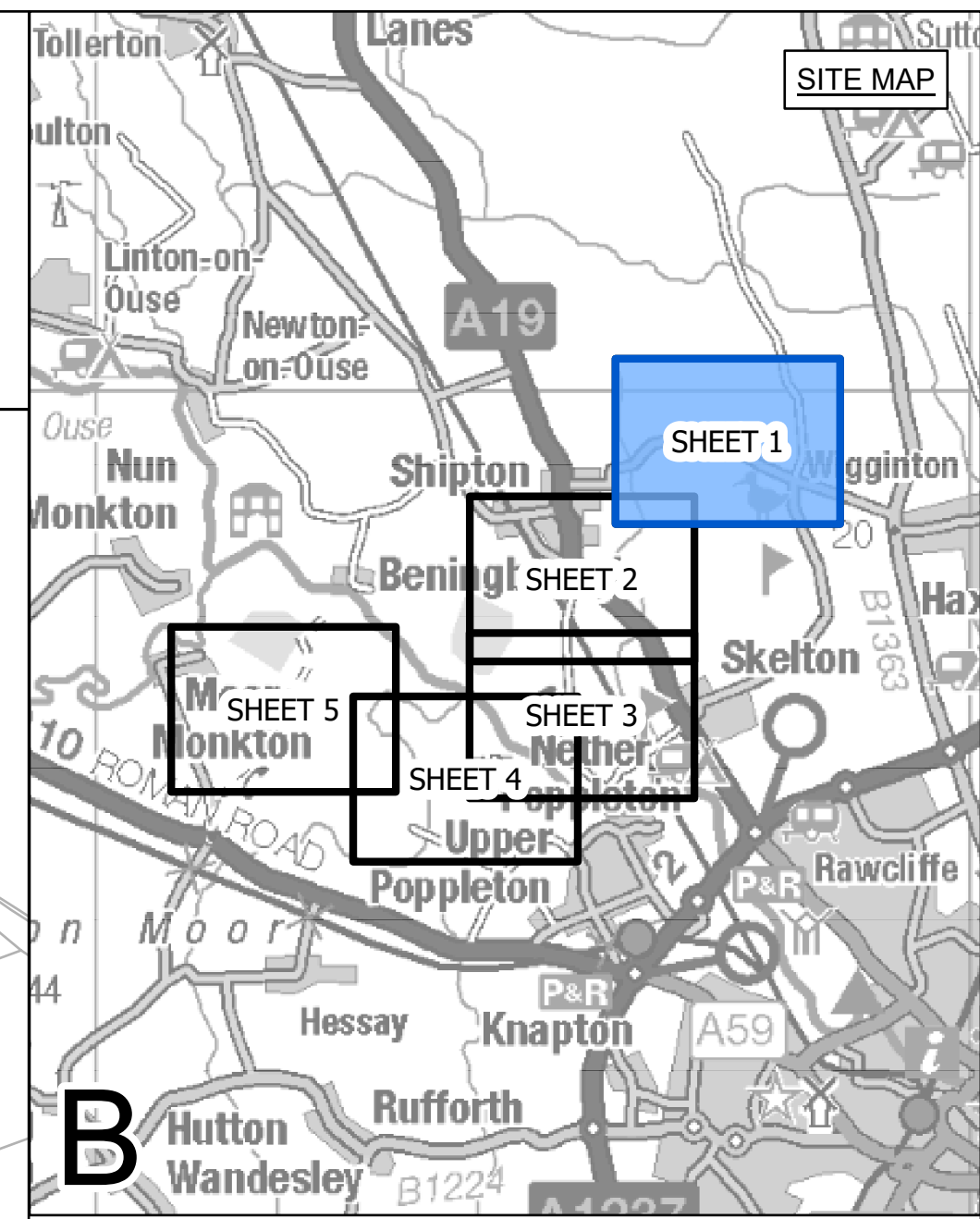
Title

NATIONAL GRID (YORKSHIRE GREEN ENERGY ENABLEMENT PROJECT) ORDER STATUTORY OR NON-STATUTORY SITES OR FEATURES OF NATURE CONSERVATION KEY PLAN REGULATION 5(2)(I)(i) SECTION B, SHEET 1 OF 1

Application Number	EN020024
National Grid Drawing Reference	DCO_B/NR/KP/01
Scale	1:10,000
Sheet Size	A0
Sheet	SHEET 1 OF 1
Issue	B



NATIONAL GRID (YORKSHIRE GREEN ENERGY ENABLEMENT PROJECT) ORDER
 STATUTORY OR NON-STATUTORY SITES OR FEATURES OF NATURE CONSERVATION PLAN
 REGULATION 5(2)(1)(i)
 SECTION B, SHEET 1 OF 5



- LEGEND**
- LOCAL AUTHORITY BOUNDARY
 - - - - SECTION BOUNDARY
 - ▭ ORDER LIMITS
 - ▨ SITE OF INTEREST FOR NATURE CONSERVATION (SINC)
 - ▨ CANDIDATE SITE OF INTEREST FOR NATURE CONSERVATION (SINC)
 - ▨ YORKSHIRE WILDLIFE TRUST (WWT) RESERVE
 - ▨ ANCIENT WOODLAND
 - + VETERAN TREE

Notes

This drawing is scaled at paper size A0, therefore any prints taken at smaller sizes will affect accuracy of the measurement units and should not be scaled against.

For additional detail on the plan suites, please refer to Document 2.3 Plan Guidance Document, located in Volume 2 of the DCO Application.

The local authorities' boundaries and titles are correct at the time of submission. North Yorkshire County Council and its 7 districts are expected to form a new single council (North Yorkshire Council) on 1 April 2023.

The statutory site boundary information was obtained from the Multi-Agency Geographic Information for the Countryside (MAGIC) website. Non-statutory site data has been supplied by West Yorkshire Ecology Services and North and East Yorkshire Ecological Data Centre.

There are no sites of geological importance within the Order Limits on this plan.

Coordinate System: British National Grid
 Sheet X Centroid Coordinate: 456581 Sheet Y Centroid Coordinate: 459424

0 100 200 300 Meters

BACKGROUND MAPPING INFORMATION HAS BEEN REPRODUCED FROM THE ORDNANCE SURVEY BY PERMISSION OF ORDNANCE SURVEY OF THE CONTROLLER OF HER MAJESTY'S STATIONERY OFFICE. CROWN COPYRIGHT ORDNANCE SURVEY ©. BLUESKY INTERNATIONAL LTD ©. NATIONAL GRID ELECTRICITY - 100024241.

Issue	Date	Remarks	Drawn	Checked	Approved
B	28/07/2023	FOR DEADLINE SIX	MTH	SF	EMD
A	01/11/2022	FOR DCO SUBMISSION	MTH	SF	EMD

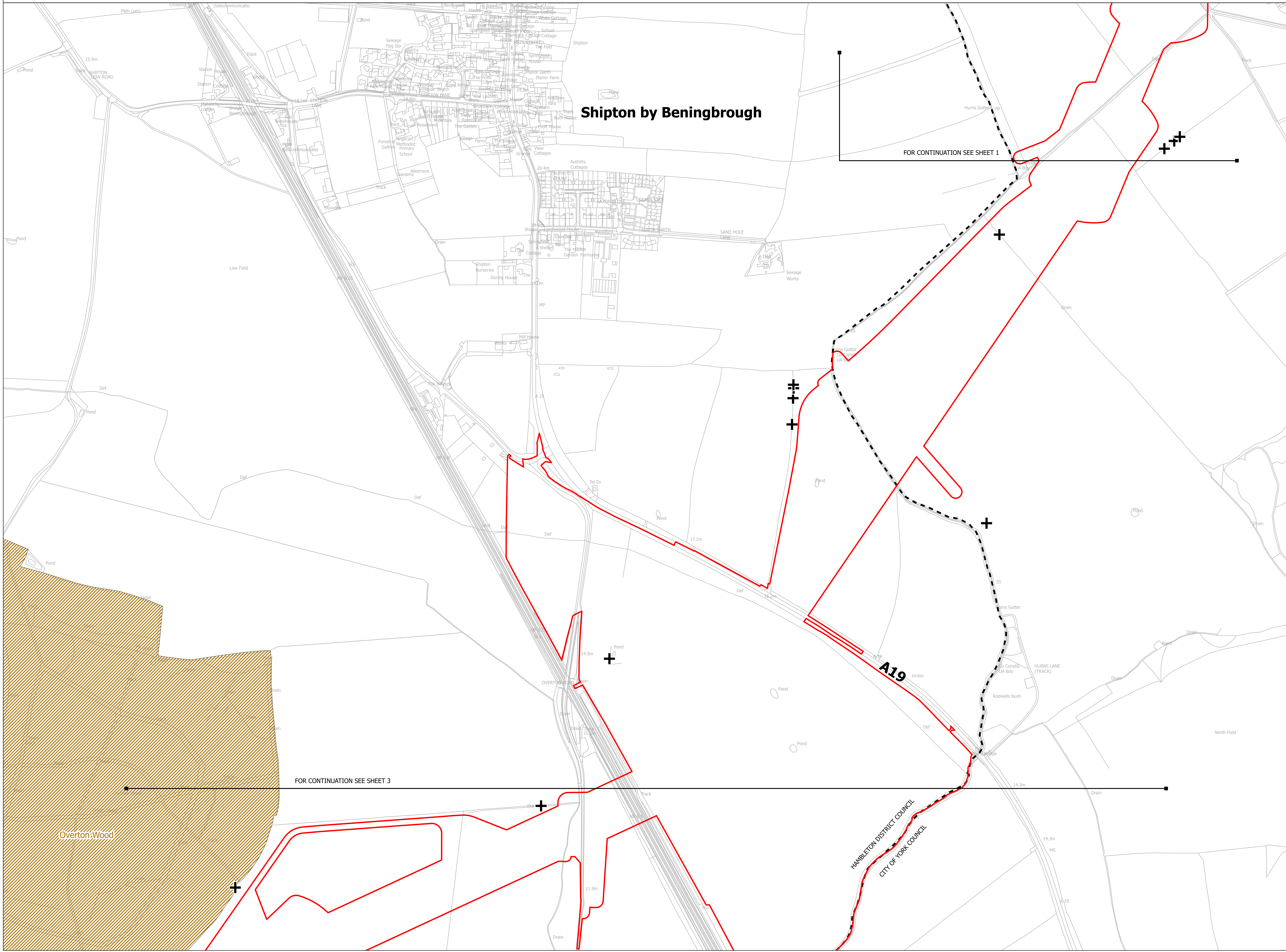
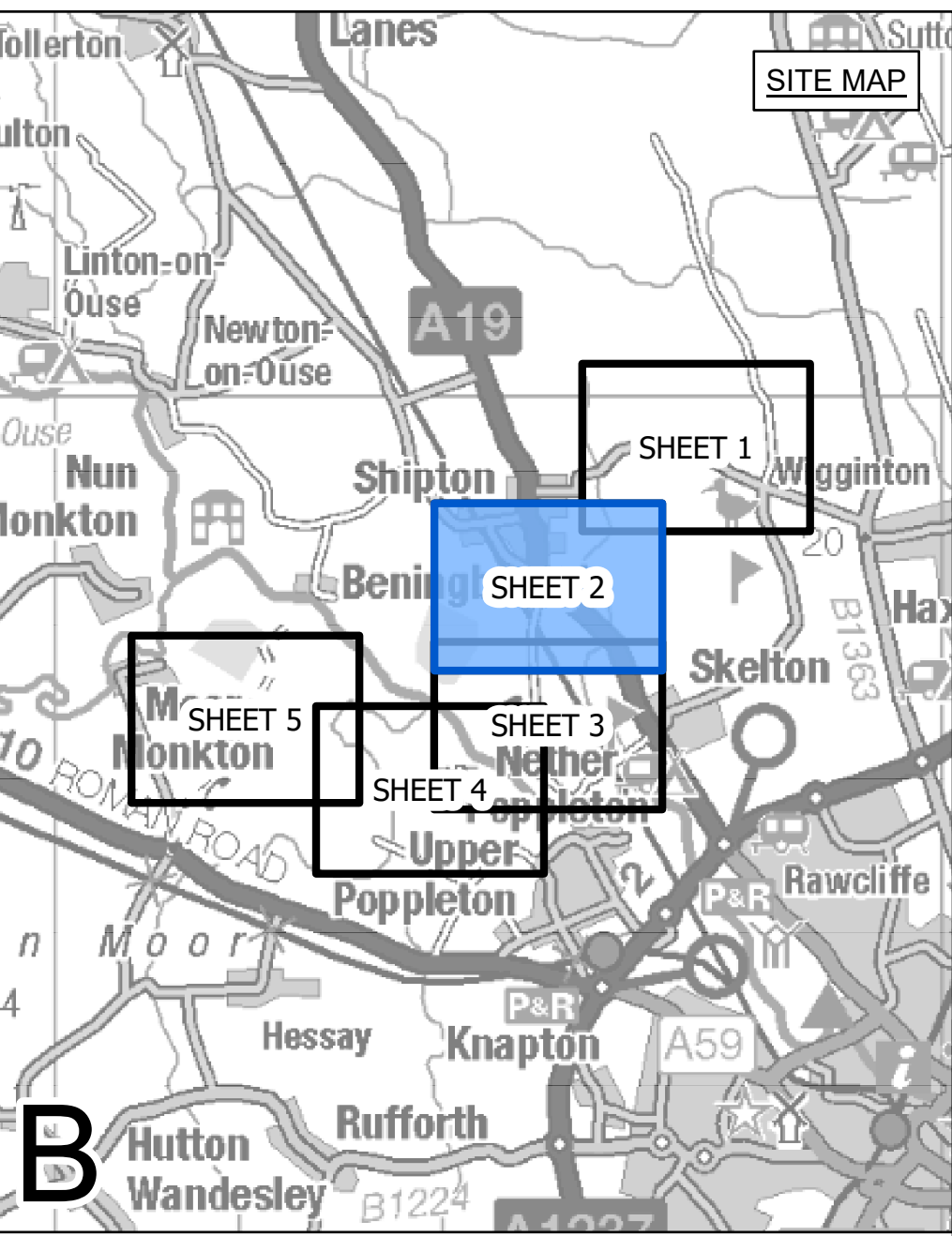
Title

NATIONAL GRID (YORKSHIRE GREEN ENERGY ENABLEMENT PROJECT) ORDER STATUTORY OR NON-STATUTORY SITES OR FEATURES OF NATURE CONSERVATION PLAN REGULATION 5(2)(1)(i) SECTION B, SHEET 1 OF 5

nationalgrid			
Application Number	EN020024		
National Grid Drawing Reference			
DCO_B/NR/PS/01			
Scale	Sheet Size	Sheet	Issue
1:2,500	A0	SHEET 1 OF 5	B



NATIONAL GRID (YORKSHIRE GREEN ENERGY ENABLEMENT PROJECT) ORDER
 STATUTORY OR NON-STATUTORY SITES OR FEATURES OF NATURE CONSERVATION PLAN
 REGULATION 5(2)(1)(i)
 SECTION B, SHEET 2 OF 5



- LEGEND**
- LOCAL AUTHORITY BOUNDARY
 - - - SECTION BOUNDARY
 - ▭ ORDER LIMITS
 - ▨ SITE OF INTEREST FOR NATURE CONSERVATION (SINC)
 - ▨ CANDIDATE SITE OF INTEREST FOR NATURE CONSERVATION (SINC)
 - ▨ YORKSHIRE WILDLIFE TRUST (WWT) RESERVE
 - ▨ ANCIENT WOODLAND
 - ✚ VETERAN TREE

Notes

This drawing is scaled at paper size A0, therefore any prints taken at smaller sizes will affect accuracy of the measurement units and should not be scaled against.

For additional detail on the plan suites, please refer to Document 2.3 Plan Guidance Document, located in Volume 2 of the DCO Application.

The local authorities' boundaries and titles are correct at the time of submission. North Yorkshire County Council and its 7 districts are expected to form a new single council (North Yorkshire Council) on 1 April 2023.

The statutory site boundary information was obtained from the Multi-Agency Geographic Information for the Countryside (MAGIC) website. Non-statutory site data has been supplied by West Yorkshire Ecology Services and North and East Yorkshire Ecological Data Centre.

There are no sites of geological importance within the Order Limits on this plan.

Coordinate System: British National Grid
 Sheet X Centroid Coordinate: 455555 Sheet Y Centroid Coordinate: 457851

0 100 200 300 Meters

BACKGROUND MAPPING INFORMATION HAS BEEN REPRODUCED FROM THE ORDNANCE SURVEY BY PERMISSION OF ORDNANCE SURVEY OF THE CONTROLLER OF HER MAJESTY'S STATIONERY OFFICE. CROWN COPYRIGHT ORDNANCE SURVEY ©. BLUESKY INTERNATIONAL LTD ©. NATIONAL GRID ELECTRICITY - 100024241.

Issue	Date	Remarks	Drawn	Checked	Approved
B	28/07/2023	FOR DEADLINE SIX	MTH	SF	EMD
A	01/11/2022	FOR DCO SUBMISSION	MTH	SF	EMD

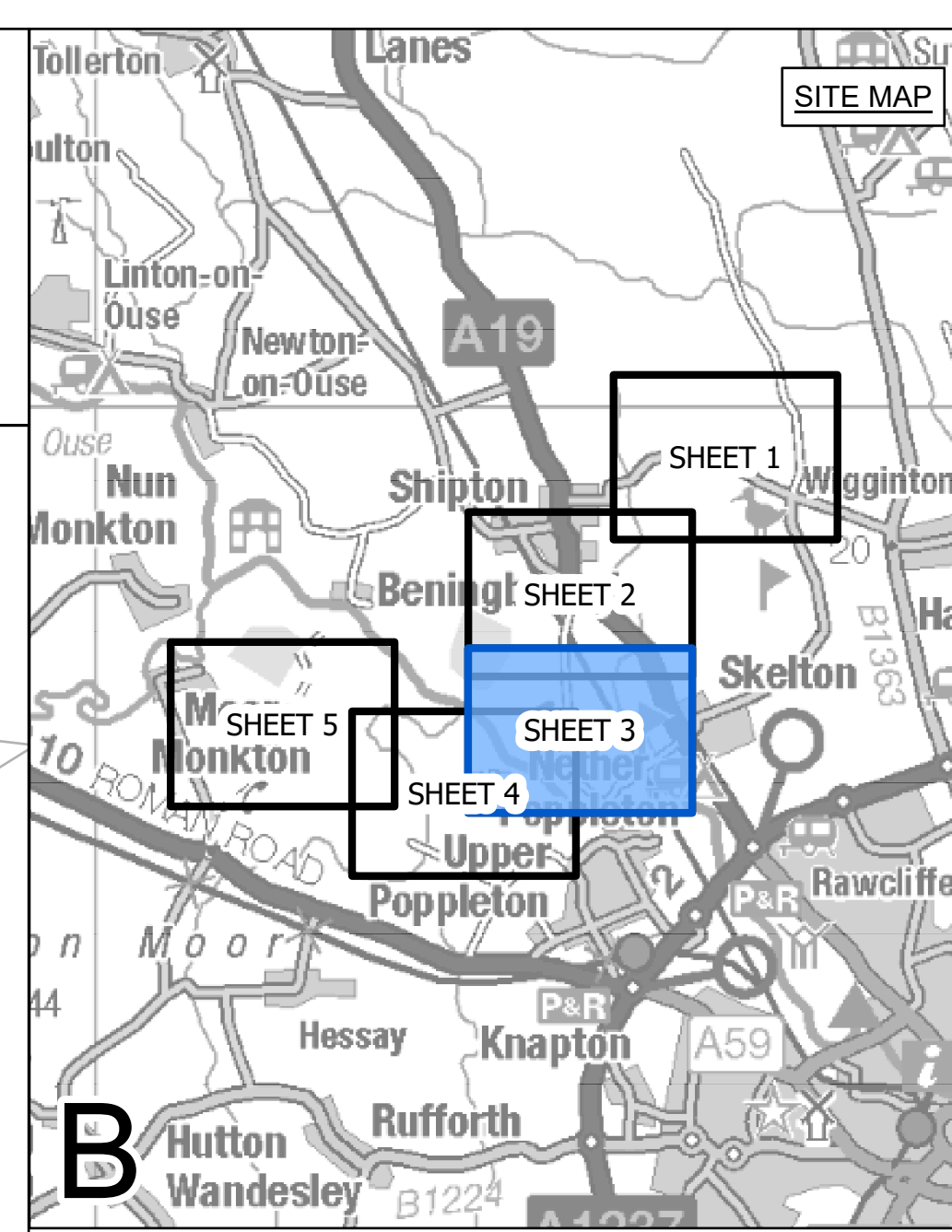
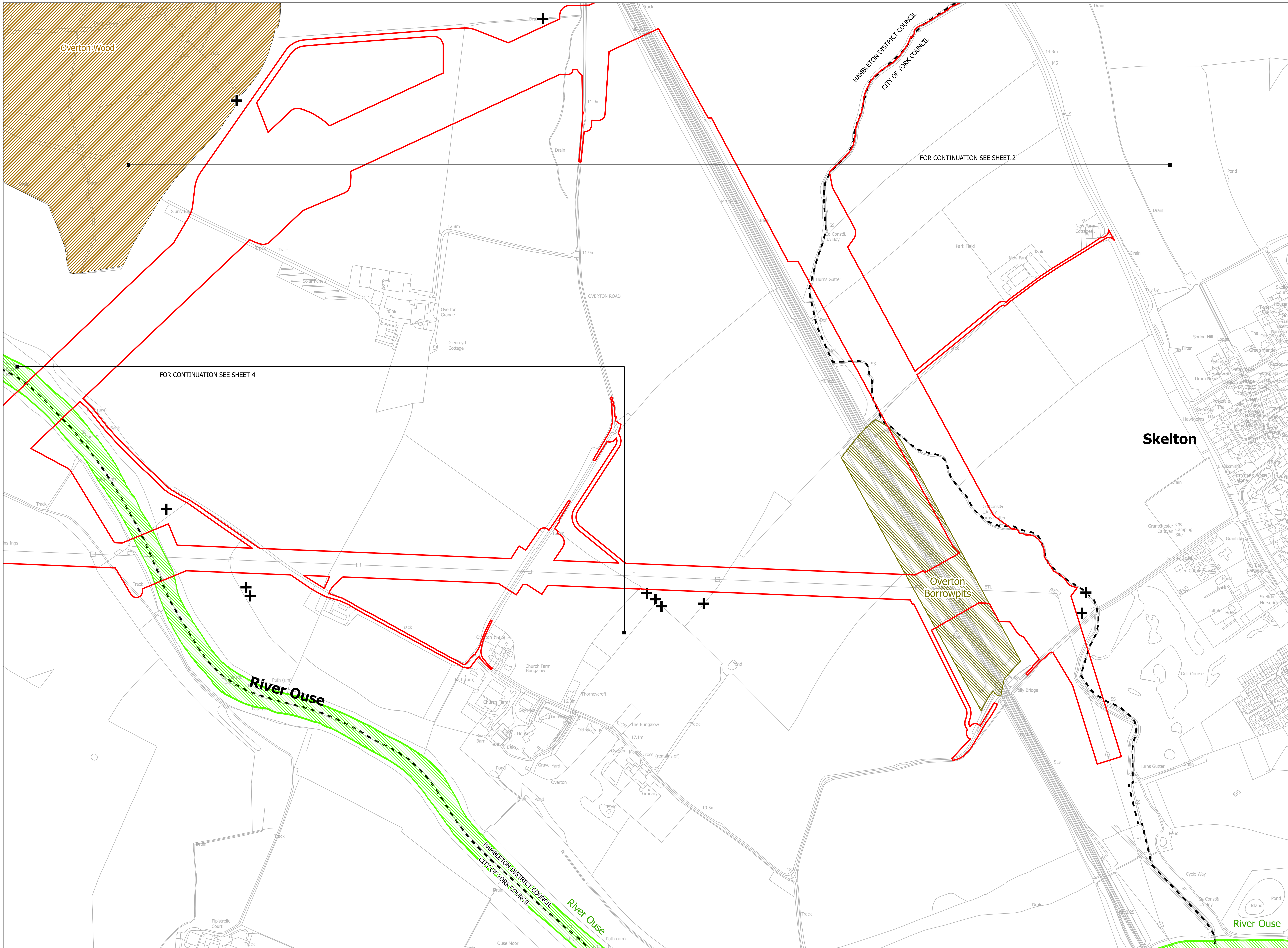
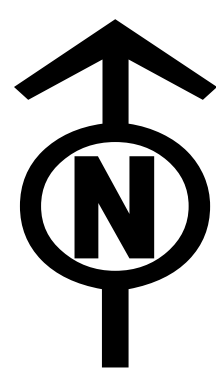
Title

NATIONAL GRID
 (YORKSHIRE GREEN ENERGY
 ENABLEMENT PROJECT) ORDER
 STATUTORY OR NON-STATUTORY SITES OR
 FEATURES OF NATURE CONSERVATION PLAN
 REGULATION 5(2)(1)(i)
 SECTION B, SHEET 2 OF 5

nationalgrid

Application Number	EN020024
National Grid Drawing Reference	DCO_B/NR/PS/02
Scale	1:2,500
Sheet Size	A0
Sheet	SHEET 2 OF 5
Issue	B

NATIONAL GRID (YORKSHIRE GREEN ENERGY ENABLEMENT PROJECT) ORDER
 STATUTORY OR NON-STATUTORY SITES OR FEATURES OF NATURE CONSERVATION PLAN
 REGULATION 5(2)(1)(i)
 SECTION B, SHEET 3 OF 5



- LEGEND**
- LOCAL AUTHORITY BOUNDARY
 - SECTION BOUNDARY
 - ORDER LIMITS
 - SITE OF INTEREST FOR NATURE CONSERVATION (SINC)
 - CANDIDATE SITE OF INTEREST FOR NATURE CONSERVATION (SINC)
 - YORKSHIRE WILDLIFE TRUST (WWT) RESERVE
 - ANCIENT WOODLAND
 - + VETERAN TREE

Notes

This drawing is scaled at paper size A0, therefore any prints taken at smaller sizes will affect accuracy of the measurement units and should not be scaled against.

For additional detail on the plan suites, please refer to Document 2.3 Plan Guidance Document, located in Volume 2 of the DCO Application.

The local authorities' boundaries and titles are correct at the time of submission. North Yorkshire County Council and its 7 districts are expected to form a new single council (North Yorkshire Council) on 1 April 2023.

The statutory site boundary information was obtained from the Multi-Agency Geographic Information for the Countryside (MAGIC) website. Non-statutory site data has been supplied by West Yorkshire Ecology Services and North and East Yorkshire Ecological Data Centre.

There are no sites of geological importance within the Order Limits on this plan.

Coordinate System: British National Grid
 Sheet X Centroid Coordinate: 455553 Sheet Y Centroid Coordinate: 456286

0 100 200 300 Meters

BACKGROUND MAPPING INFORMATION HAS BEEN REPRODUCED FROM THE ORDNANCE SURVEY BY PERMISSION OF ORDNANCE SURVEY OF THE CONTROLLER OF HER MAJESTY'S STATIONERY OFFICE. CROWN COPYRIGHT ORDNANCE SURVEY ©. BLUESKY INTERNATIONAL LTD ©. NATIONAL GRID ELECTRICITY - 100024241.

Issue	Date	Remarks	Drawn	Checked	Approved
B	28/07/2023	FOR DEADLINE SIX	MTH	SF	EMD
A	01/11/2022	FOR DCO SUBMISSION	MTH	SF	EMD

Title

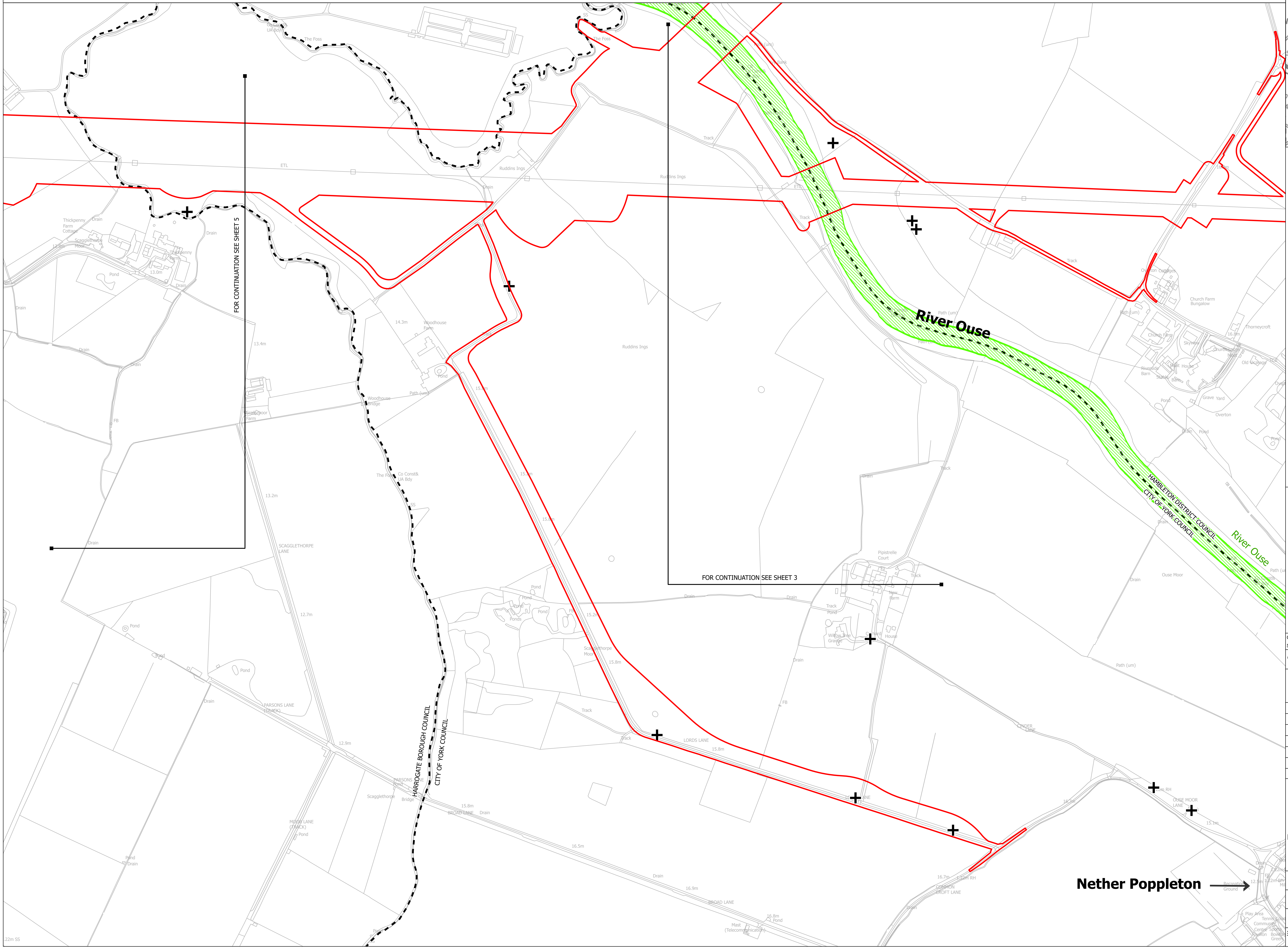
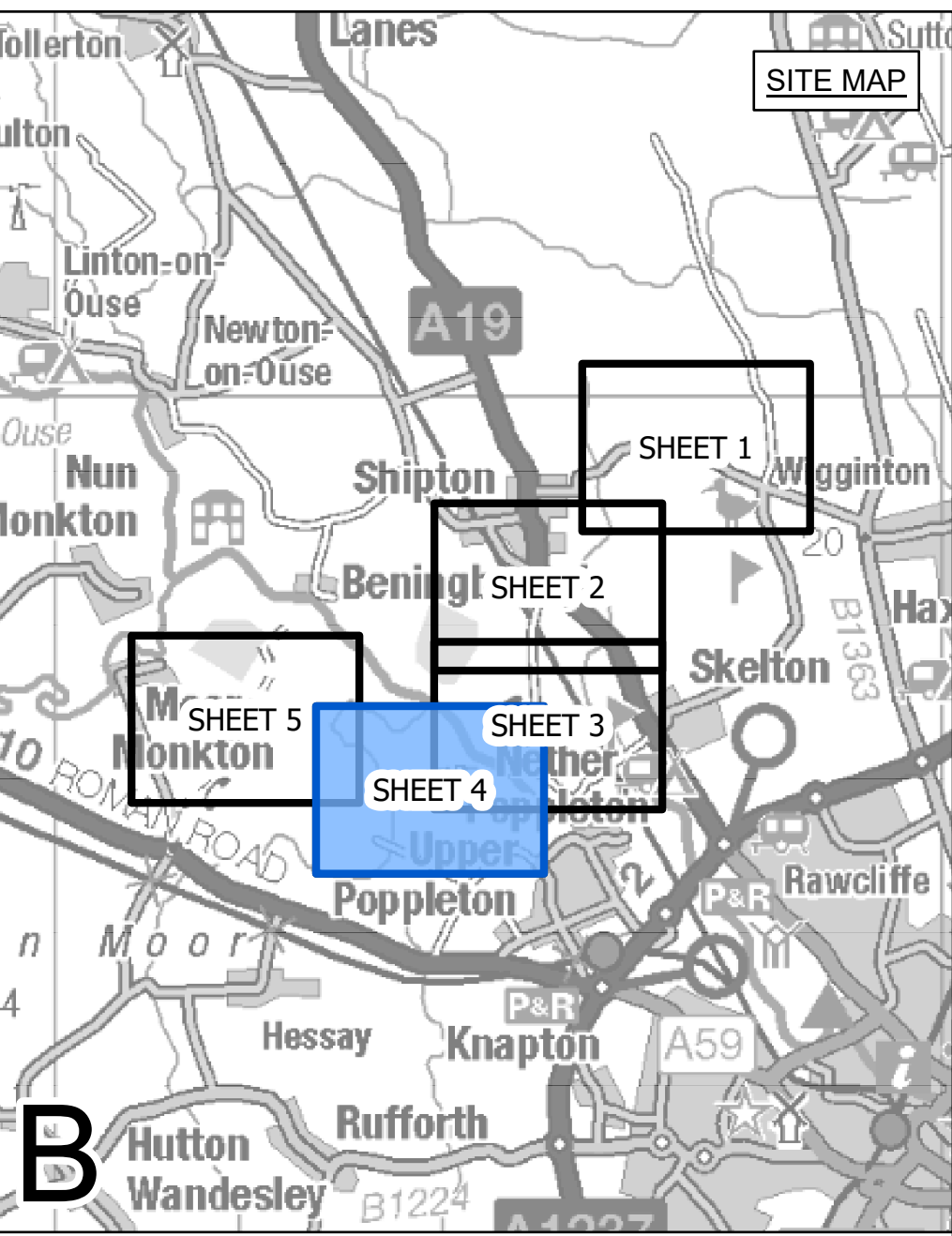
NATIONAL GRID
 (YORKSHIRE GREEN ENERGY
 ENABLEMENT PROJECT) ORDER
 STATUTORY OR NON-STATUTORY SITES OR
 FEATURES OF NATURE CONSERVATION PLAN
 REGULATION 5(2)(1)(i)
 SECTION B, SHEET 3 OF 5

nationalgrid

Application Number	EN020024
National Grid Drawing Reference	DCO_B/NR/PS/03
Scale	1:2,500
Sheet Size	A0
Sheet	SHEET 3 OF 5
Issue	B



NATIONAL GRID (YORKSHIRE GREEN ENERGY ENABLEMENT PROJECT) ORDER
 STATUTORY OR NON-STATUTORY SITES OR FEATURES OF NATURE CONSERVATION PLAN
 REGULATION 5(2)(1)(i)
 SECTION B, SHEET 4 OF 5



- LEGEND**
- LOCAL AUTHORITY BOUNDARY
 - - - SECTION BOUNDARY
 - ▭ ORDER LIMITS
 - ▨ SITE OF INTEREST FOR NATURE CONSERVATION (SINC)
 - ▨ CANDIDATE SITE OF INTEREST FOR NATURE CONSERVATION (SINC)
 - ▨ YORKSHIRE WILDLIFE TRUST (WWT) RESERVE
 - ▨ ANCIENT WOODLAND
 - + VETERAN TREE

Notes

This drawing is scaled at paper size A0, therefore any prints taken at smaller sizes will affect accuracy of the measurement units and should not be scaled against.

For additional detail on the plan suites, please refer to Document 2.3 Plan Guidance Document, located in Volume 2 of the DCO Application.

The local authorities' boundaries and titles are correct at the time of submission. North Yorkshire County Council and its 7 districts are expected to form a new single council (North Yorkshire Council) on 1 April 2023.

The statutory site boundary information was obtained from the Multi-Agency Geographic Information for the Countryside (MAGIC) website. Non-statutory site data has been supplied by West Yorkshire Ecology Services and North and East Yorkshire Ecological Data Centre.

There are no sites of geological importance within the Order Limits on this plan.

Coordinate System: British National Grid
 Sheet X Centroid Coordinate: 454220 Sheet Y Centroid Coordinate: 455561

0 100 200 300 Meters

BACKGROUND MAPPING INFORMATION HAS BEEN REPRODUCED FROM THE ORDNANCE SURVEY BY PERMISSION OF ORDNANCE SURVEY OF THE CONTROLLER OF HER MAJESTY'S STATIONERY OFFICE. CROWN COPYRIGHT ORDNANCE SURVEY © BLUESKY INTERNATIONAL LTD © NATIONAL GRID ELECTRICITY - 100024241.

Issue	Date	Remarks	Drawn	Checked	Approved
B	28/07/2023	FOR DEADLINE SIX	MTH	SF	EMD
A	01/11/2022	FOR DCO SUBMISSION	MTH	SF	EMD

Title

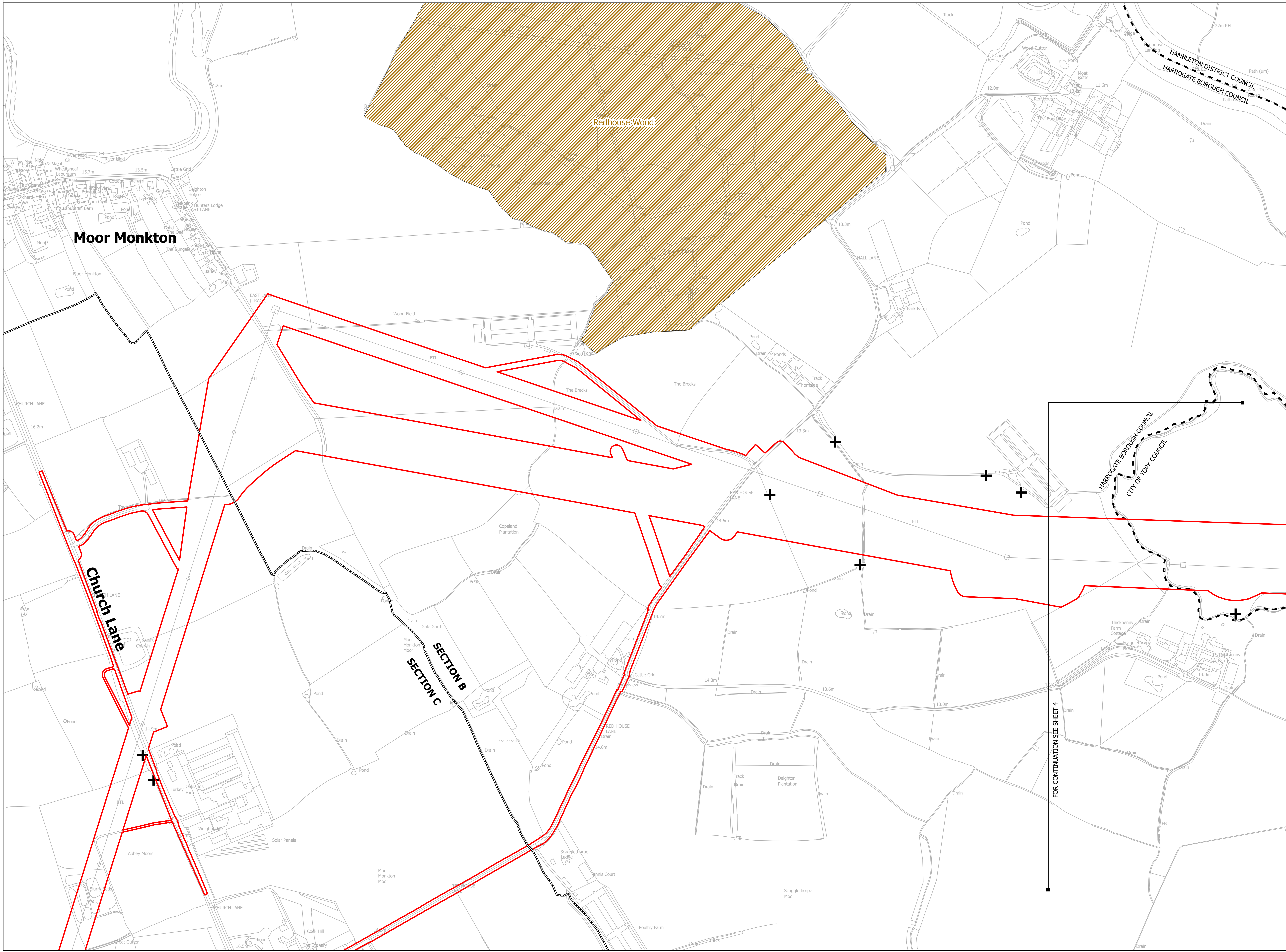
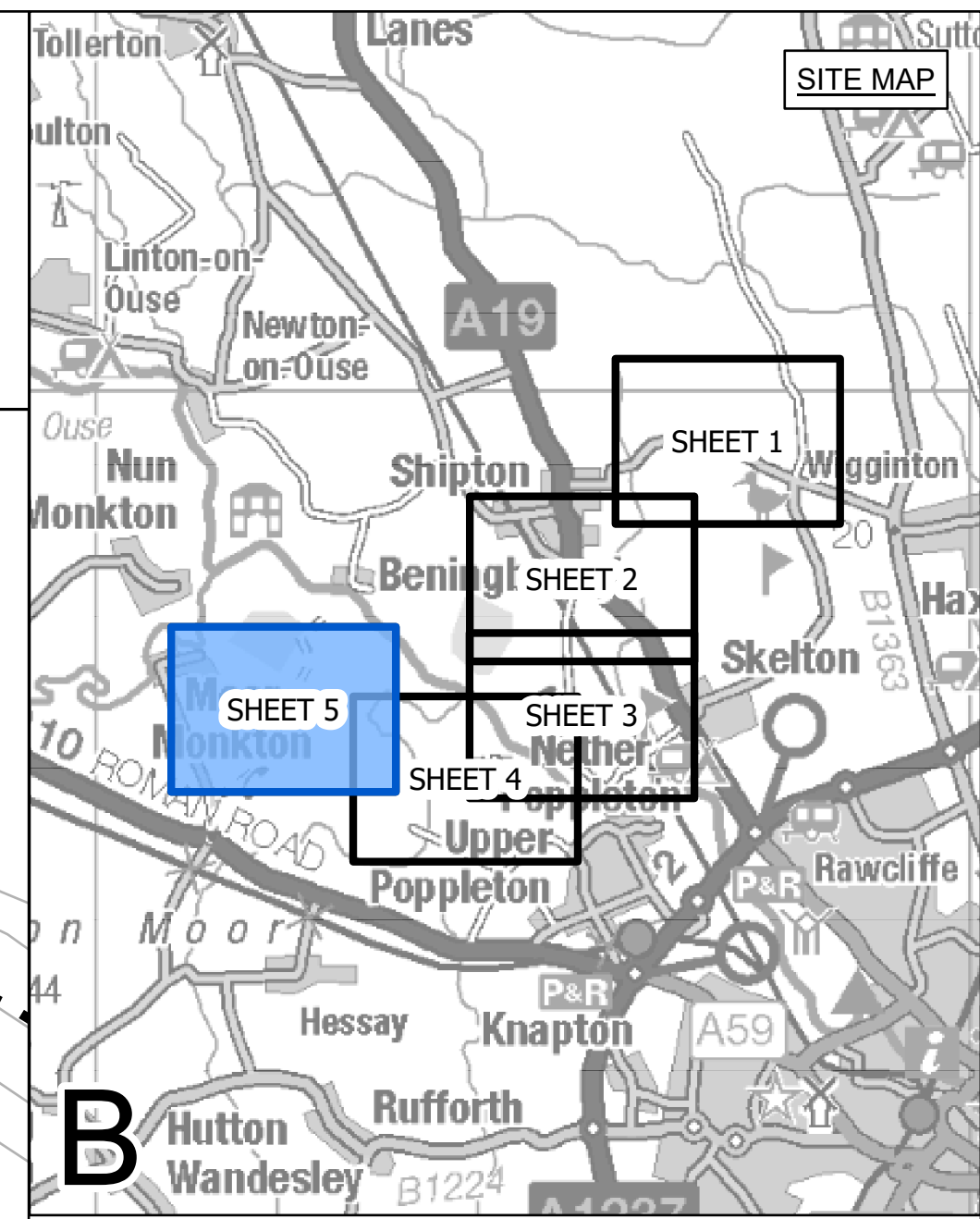
NATIONAL GRID (YORKSHIRE GREEN ENERGY ENABLEMENT PROJECT) ORDER STATUTORY OR NON-STATUTORY SITES OR FEATURES OF NATURE CONSERVATION PLAN REGULATION 5(2)(1)(i) SECTION B, SHEET 4 OF 5

Application Number	EN020024		
National Grid Drawing Reference	DCO_B/NR/PS/04		
Scale	Sheet Size	Sheet	Issue
1:2,500	A0	SHEET 4 OF 5	B

Nether Poppleton →



NATIONAL GRID (YORKSHIRE GREEN ENERGY ENABLEMENT PROJECT) ORDER
 STATUTORY OR NON-STATUTORY SITES OR FEATURES OF NATURE CONSERVATION PLAN
 REGULATION 5(2)(1)(i)
 SECTION B, SHEET 5 OF 5



- LEGEND**
- LOCAL AUTHORITY BOUNDARY
 - - - SECTION BOUNDARY
 - ▭ ORDER LIMITS
 - ▨ SITE OF INTEREST FOR NATURE CONSERVATION (SINC)
 - ▨ CANDIDATE SITE OF INTEREST FOR NATURE CONSERVATION (SINC)
 - ▨ YORKSHIRE WILDLIFE TRUST (WWT) RESERVE
 - ▨ ANCIENT WOODLAND
 - + VETERAN TREE

Notes

This drawing is scaled at paper size A0, therefore any prints taken at smaller sizes will affect accuracy of the measurement units and should not be scaled against.

For additional detail on the plan suites, please refer to Document 2.3 Plan Guidance Document, located in Volume 2 of the DCO Application.

The local authorities' boundaries and titles are correct at the time of submission. North Yorkshire County Council and its 7 districts are expected to form a new single council (North Yorkshire Council) on 1 April 2023.

The statutory site boundary information was obtained from the Multi-Agency Geographic Information for the Countryside (MAGIC) website. Non-statutory site data has been supplied by West Yorkshire Ecology Services and North and East Yorkshire Ecological Data Centre.

There are no sites of geological importance within the Order Limits on this plan.

Coordinate System: British National Grid
 Sheet X Centroid Coordinate: 452136 Sheet Y Centroid Coordinate: 456359



BACKGROUND MAPPING INFORMATION HAS BEEN REPRODUCED FROM THE ORDNANCE SURVEY BY PERMISSION OF ORDNANCE SURVEY OF THE CONTROLLER OF HER MAJESTY'S STATIONERY OFFICE. CROWN COPYRIGHT ORDNANCE SURVEY ©. BLUESKY INTERNATIONAL LTD ©. NATIONAL GRID ELECTRICITY - 100024241.

Issue	Date	Remarks	Drawn	Checked	Approved
B	28/07/2023	FOR DEADLINE SIX	MTH	SF	EMD
A	01/11/2022	FOR DCO SUBMISSION	MTH	SF	EMD

Title

NATIONAL GRID
 (YORKSHIRE GREEN ENERGY
 ENABLEMENT PROJECT) ORDER
 STATUTORY OR NON-STATUTORY SITES OR
 FEATURES OF NATURE CONSERVATION PLAN
 REGULATION 5(2)(1)(i)
 SECTION B, SHEET 5 OF 5

Application Number		EN020024	
National Grid Drawing Reference		DCO_B/NR/PS/05	
Scale	Sheet Size	Sheet	Issue
1:2,500	A0	SHEET 5 OF 5	B

**National Grid plc
National Grid House,
Warwick Technology Park,
Gallows Hill, Warwick.
CV34 6DA United Kingdom**

**Registered in England and
Wales
No. 4031152**